



Smartist

Industrial Solutions & Technologies

www.smartist.com.tr

October 2025 / Revision SCP_030

COMPANY PROFILE

Founded : February 2021

Headquarters : Bursa / Türkiye

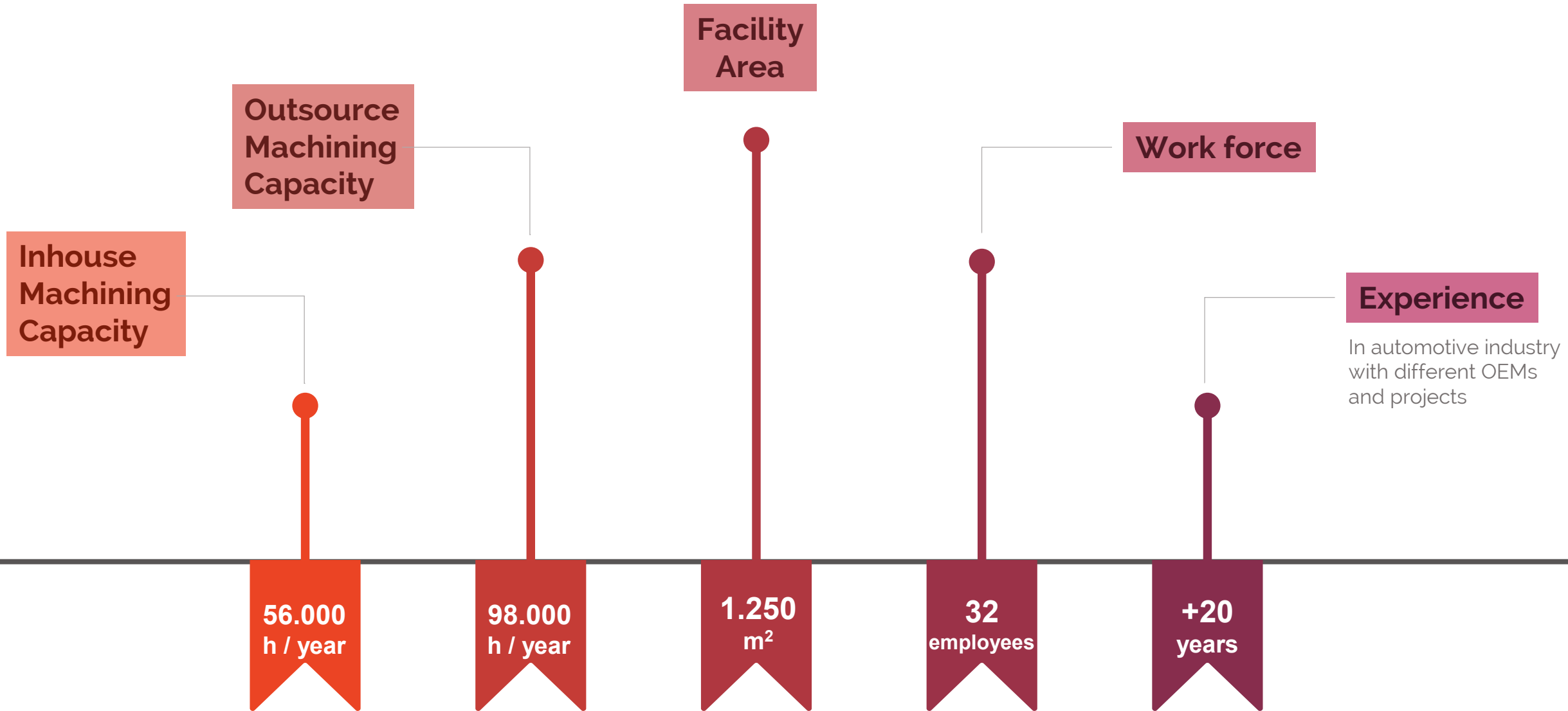
Legal Structure : Smartist Ltd. Co.

Total Sales (2024 EOY) : 1.5 m€

Total Sales (2025 EOY forecast) : 2.3 m€



Main Figures





TÜRK OTOMOBİL FABRİKASI A.Ş.



Customers & References

Machine and Equipment List

01 CNC 5 AXIS SIMULTANEOUS MACHINING CENTER

Hermle C650 / 2025
Dia. 1100 / Max 1.5 tonnes



02 CNC DOUBLE COLUMN MACHINING CENTER

Kafo (RVM 5135) / 2023
5100 x 3500 x 1500

03 CNC DOUBLE COLUMN MACHINING CENTER

Kafo (KMC 4127) / 2022
4100 x 2700 x 1100

04 CNC DOUBLE COLUMN MACHINING CENTER

Skymaster (VM3018A) / 2023
3000 x 1800 x 1000

05 CNC VERTICAL MACHINING CENTER

Sunmill (JHV 1500) / 2022
1500 x 750 x 700

06 CNC VERTICAL MACHINING CENTER

YCM (NSV 106A) / 2022
1000 x 600 x 600

07 CMM MEASUREMENT DEVICE

Hexagon Global Lite 12.22.10
2200 x 1200 x 1000

08 WIRE EDMs (3 pcs)

Charmilles (510P) / 2003
700 x 450 x 400
Charmilles (290P) / 2003
400 x 250 x 200
Charmilles (CUT20P) / 2012
350 x 250 x 250

09 STAMPING PRESS

160 Tonnes Eccentric
Dong Shin / 1990
1380 x 760

10 LASER TRACKER

Trak Nova Freescan / 2025

11 ABSOLUTE ARM

Hexagon / 2025
V3P, 8525, 7-Axis

12 OVERHEAD CRANES

16+5 Tons
20+10 Tons

CNC MACHINING

1

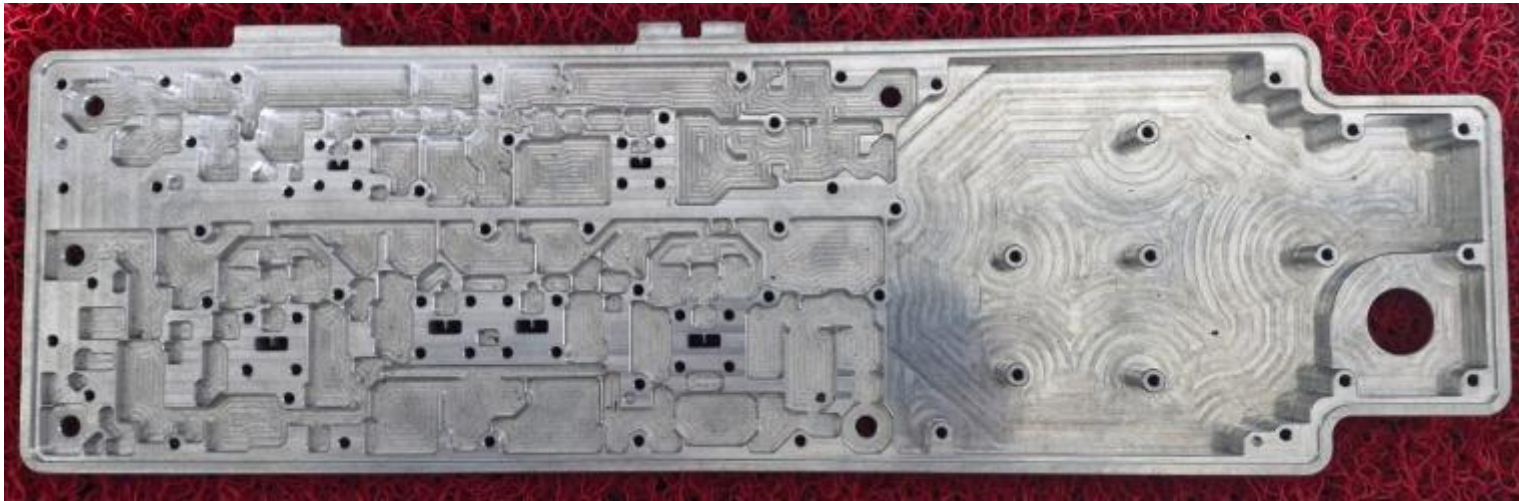
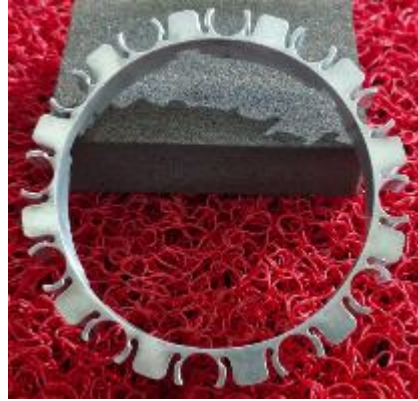
- CNC Machining Centers
- CNC Automatic Lathes
- Wire EDMs
- Surface Grinding



PRECISION MACHINING

2

- Automotive CNC machined spare parts
- Aviation & Defence industry special machinings
- Space industry precision machined parts
- All kind of advanced material machinings



TOOL & DIE PRODUCTION

3

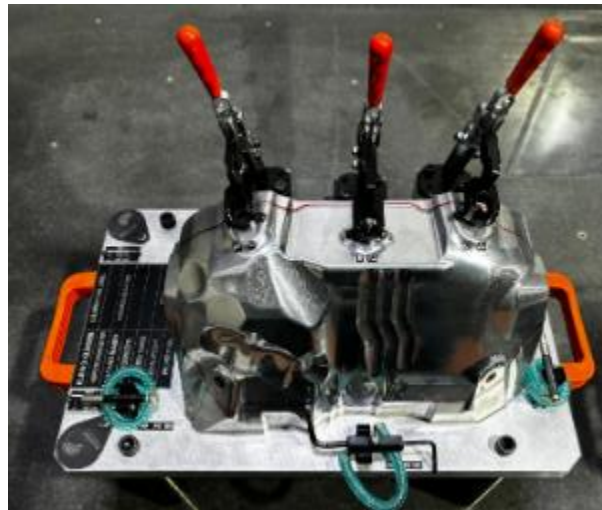
- Skin Panel Tools
- Progressive Tools
- Transfer Tools
- Tandem Tools
- Prototype Tools
- Map0 & Map1 Production
- Tool Maintenance
- Tool Spare Parts



FIXTURE & JIG PRODUCTION

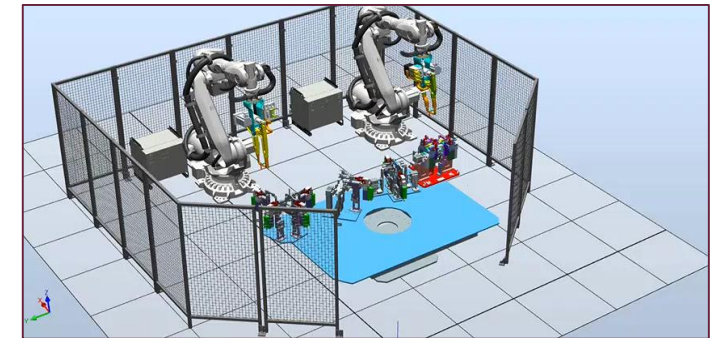
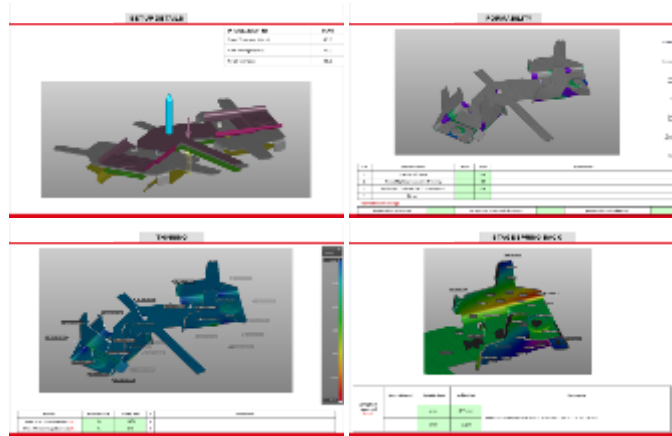
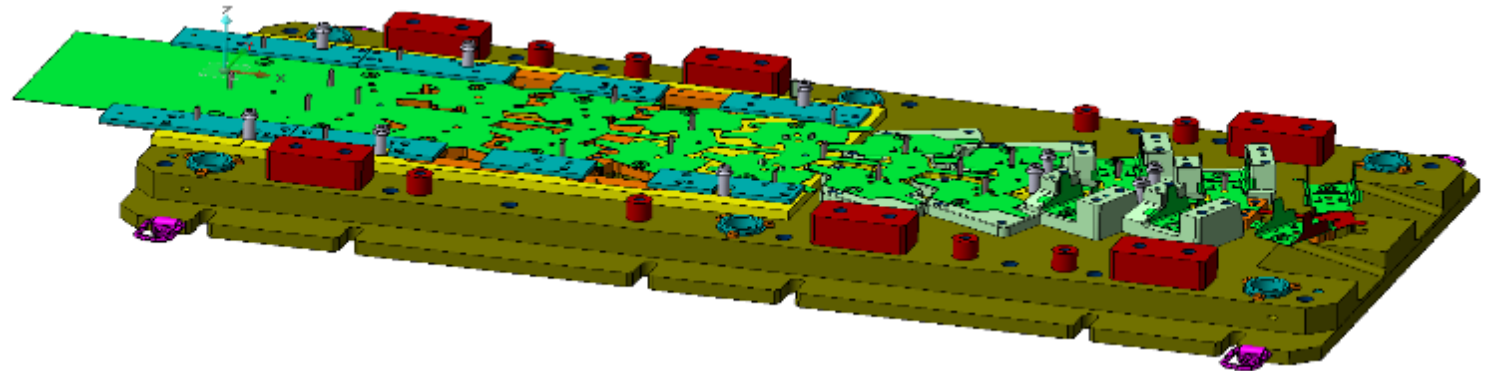
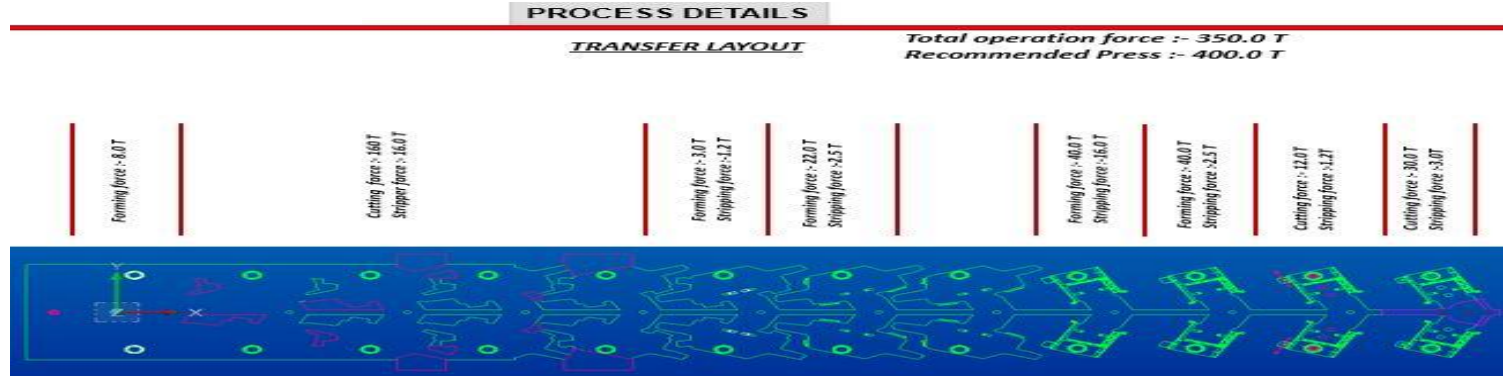
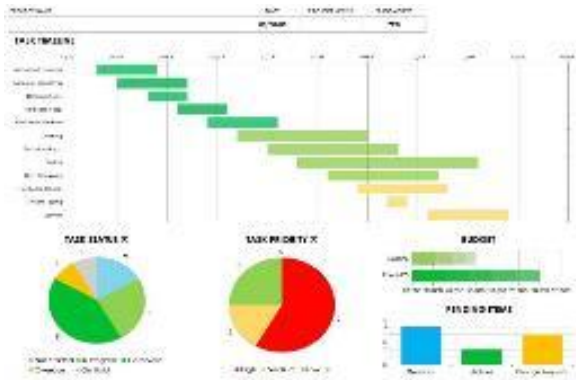
4

- Assembly Fixtures
- Control / Checking Fixtures
- Welding Fixtures
- Scanning Fixtures
- Riveting / Crimping Fixtures
- Poka Yoke Fixtures
- Fixture Revisions
- Fixture Maintenance
- Fixture Spare Parts





- Process Design
- Simulations
- Tool Design
- Fixture Design
- Project Management



Quality Certificates and Laboratories



CMM MEASUREMENT DEVICE

Hexagon Global Lite 12.22.10

2200 x 1200 x 1000




CONTACT

i

We hope that our presentation is clear to quickly recognize our company at a glance. We are looking forward to cooperate with you for your business, so please feel free to contact us for any of your questions and requests. As you know, we will be always ready and happy to serve you.

Smartist Team

- **mail** : ali.tumer@smartist.com.tr
- **web** : www.smartist.com.tr
- **linked in** : smartist industrial solutions
- **instagram** : smartist industrial solutions
- **google maps** : 



QUESTIONS & ANSWERS

